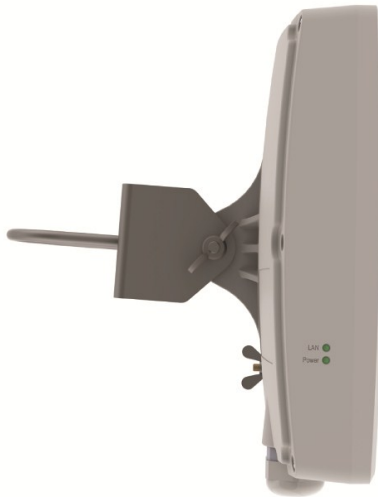


CPE 5

5 GHz High-Powered 18 dBi Integrated CPE

Product Overview



The CPE 5 is the highest EIRP solution on the updated 5 GHz Deliberant product line. CPE 5 couples a carrier-grade Atheros-based chip-set radio with a 18 dBi integrated panel antenna and external N-connector to deliver superior connectivity for long-range wireless links. This product features a robust weatherproof enclosure with a versatile tilt-swivel mounting system, and is power-over-ethernet driven, allowing for ease of installation in a variety of applications.

The software features of the CPE 5 includes a powerful Linux-based core OS, with an easy-to-use, web-based GUI, providing an increased amount of flexibility, stability, features, and management functions that are not present in other WISP products on the market today. This product is also compatible with WNMS, a centralized configuration, firmware, and statistics server for carrier class management.

Key Features

- 18 dBi integrated panel antenna
- N-connector for external antenna
- Full, half, and quarter bandwidth channels
- PoE built-in for single cable installation
- Compact weatherproof enclosure
- Configurable Multi-mode CPE
 - Client
 - Client Router
 - WDS
- Latest security technologies
- Comprehensive software features
 - IP routing
 - DHCP client/server/relay
 - DNS relay/proxy
 - Stateful inspection firewall
 - MAC/IP filtering
 - Digital device certificates
 - Multicast video support for CCTV or IPTV (IGMPv3)
- Comprehensive management features
 - Web GUI
 - Command line management via SSH
 - WNMS server support for configuration
 - SNMP V1/2 with traps supporting MIBs: 802.1, 802.1x, MIBII

Specifications

WLAN Standard

802.11a

Radio Scheme

802.11a: OFDM (64QAM, 16QAM, QPSK, BPSK)

Frequency Range

5.1 GHz - 5.85 GHz (Country dependent)

RF Output Power

Up to 22 dBm - Adjustable

Receiver Sensitivity

-93 +/- 2dBm @ 6Mbps, -74 +/- 2dBm @54 Mbps

Data Rate

802.11a: 54 / 48 / 36 / 24 / 12 / 9 / 6 Mbps

Power Supply

On-board Ethernet surge protection
Input power accepts 9V-24V power-over-ethernet, perfect for solar installations
18V / 1.1 A Power-over-Ethernet Power supply included

Operating Mode

Client/Client Router
WDS

Antenna

18 dBi wide-band antenna
(5.1GHz-5.85GHz)

3dB Beamwidth (Vertical/Horizontal)

15 deg / 13 deg

Security

Password Protection
WPA/WPA2 Personal/Enterprise
MAC Filtering
Hidden SSID support
802.11i
802.1x
Static and dynamic WEP

Enclosure

Weatherproof Enclosure
meets IP67 standards

Operating Environment

Temperature -30C - 60C
Humidity 10 - 90% (non-condensing)

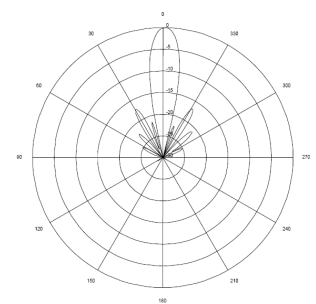
Warranty

1-Year

Certification

FCC/CE

RF Patterns (Vertical)



RF Patterns (Horizontal)

